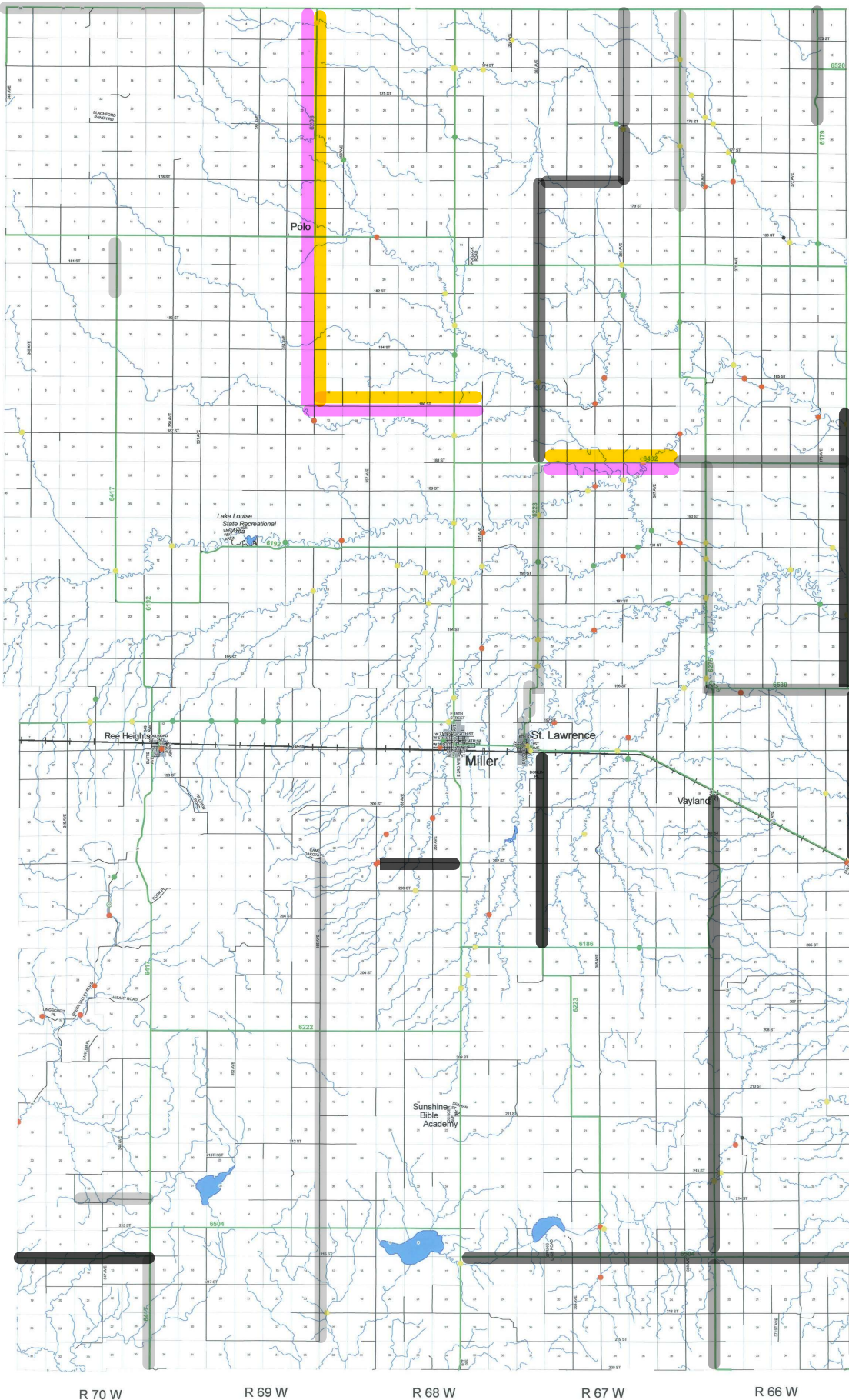


2028 Hand County Roadway Projects



2019
Federal Aid Eligibility
for
Hand County
South Dakota

Legend

Bridge Condition

- No Data
- Fair
- Good
- Poor

Local Roads

- Federal Aid Eligible
- Non Federal Aid Eligible

Prepared by
South Dakota Department of Transportation
Division of Planning and Engineering
in cooperation with the
U. S. Department of Transportation
Federal Highway Administration



PAVEMENT TREATMENT PLAN

- Level Course:
- Chip Seal:
- 2" Cold Overlay:
- Misc Patching:
- Otto Seal:

RESTRICTION OF LIABILITY

The SD-DOT makes no claims, promises or guarantees about the accuracy, completeness or adequacy of the data and expressly disclaims liability of errors and omissions of the data content. No warranty of any kind, implied, expressed or statutory, including but not limited to the warranties of non-infringement of third-party rights, title, merchantability, and fitness for a particular purpose is given with respect to this data.

- Graveling:
- Completed in 2024:
- Completed in 2025:
- Completed in 2026:
- Completed in 2027: